



Scrap Grapple Buckets

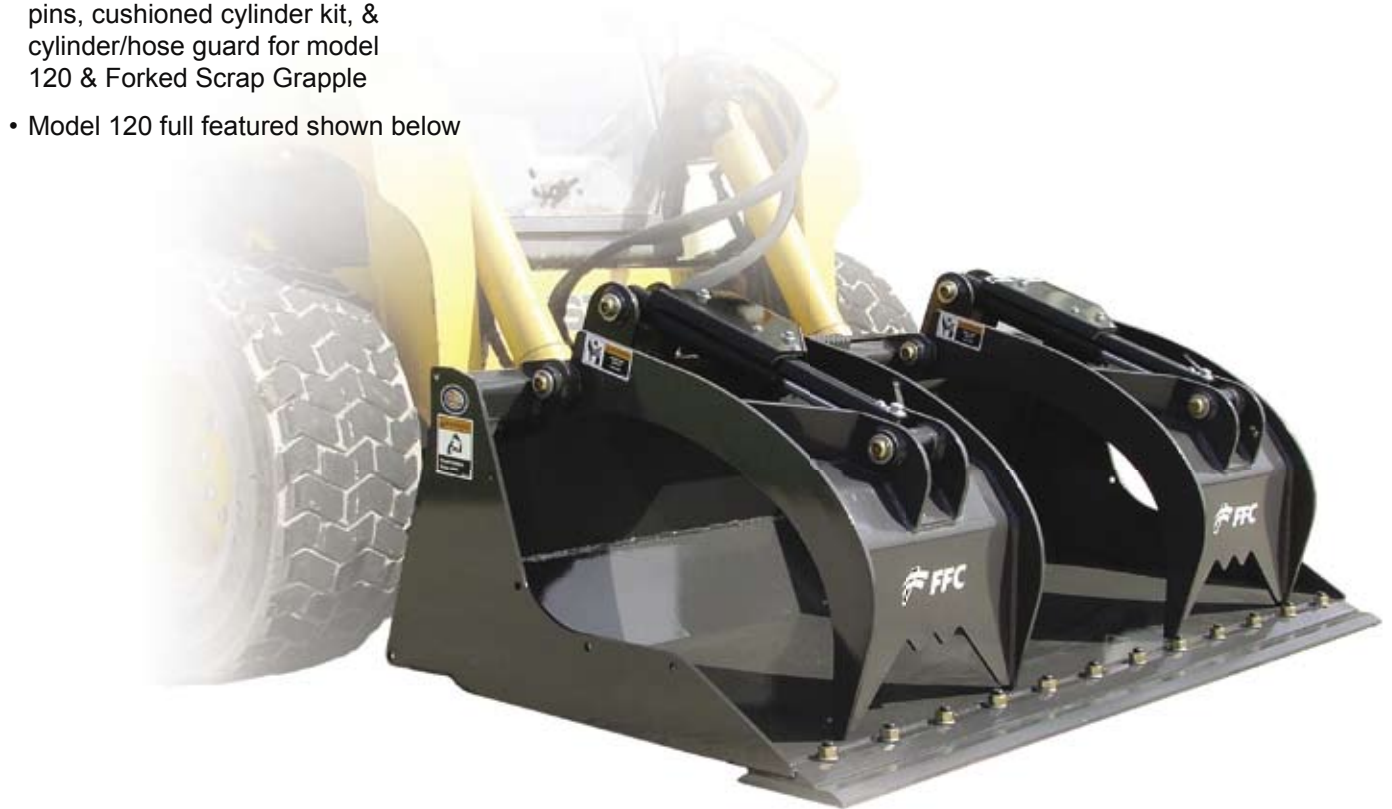
For skid-steer loaders, utility loaders, wheel loaders, & backhoe loaders

FEATURES

- Patented design withstands the demands of work in scrap handling, recycling, and other tough applications
- Full feature includes hardened pins, cushioned cylinder kit, & cylinder/hose guard for model 120 & Forked Scrap Grapple
- Model 120 full featured shown below



The Power of Combined Excellence



Model 120 & 130 Scrap Grapples

MODEL 120 (FOR SKID-STEERS AND COMPACT UTILITY LOADERS)

FEATURES:

- Optional cylinder guards protect all cylinder components
- 1½" x 8-5/8" heat-treated, greasable pivot pins on full feature
- 1½" x 27-1/8" patented grapple pins reduce torsional force
- 3/8" end plates
- Patented cushioned & sleeved cylinders are 2½" x 8" x 1¾" on full feature
- Bucket edge drilled for FFC replaceable edge unless specified
- Optional 3/4 x 8" double beveled edge

IMPORTANT: All replacement hydraulic hoses and fittings must have a minimum rated working pressure of 4000 psi. Hoses and hydraulic couplers from the attachment to the loader are included for skid-steer only.

Carrier Specifications:

lift capacities <9,000 lbs
operating weight <11,000 lbs

LAF #	Weight (approx.)	Width ID	Height Open	Height Closed	Depth
Full Featured*			A	B	C
5273*	1,303 lbs	74"	45"	19"	38"
5278*	1,514 lbs	79"	45"	19"	38"
5282*	1,542 lbs	83"	45"	19"	38"
5287*	1,577 lbs	88"	45"	19"	38"
Standard Featured					
5073	1,266 lbs	74"	45"	19"	38"
5078	1,301 lbs	79"	45"	19"	38"
5082	1,329 lbs	83"	45"	19"	38"
5087	1,364 lbs	88"	45"	19"	38"

*NOTE: Full Featured includes hardened pin, cushioned cylinder kit & cylinder/hose guard.

OPTIONS:

Part Number	Description	Weight
LAF5003*	hardened pin kit	45 lbs
LAF5002*	cushioned cylinder kit	57 lbs
LAF5004*	cylinder/hose guard kit f/universal	35 lbs
LAF5250	end plate extension for model 120	50 lbs

* field installation required

MODEL 130 (FOR COMPACT UTILITY LOADERS, SMALL WHEEL LOADERS AND BACKHOE LOADERS)

FEATURES:

- Optional cylinder guards protect all cylinder components
- 1½" x 8-5/8" heat-treated, greasable pivot pins
- 1½" x 27-1/8" patented grapple pins reduce torsional force
- Patented cushioned & sleeved cylinders are 2½" x 8" x 1¾" on full feature
- Bucket edge drilled for FFC replaceable edge unless specified
- Optional 3/4 x 8" double beveled edge

IMPORTANT: All replacement hydraulic hoses and fittings must have a minimum rated working pressure of 4000 psi. Hoses and hydraulic couplers from the attachment to the loader are included for skid-steer only.

LAF #	Weight (approx.)	Width ID	Height Open	Height Closed	Depth
			A	B	C
5283	1,665 lbs	83"	47"	21"	37"
5294	1,745 lbs	94"	47"	21"	37"

Carrier Specifications:
lift capacities <10,000 lbs
operating weight <32,000 lbs

OPTIONS:

Part Number	Description	Weight
LAF5252	end plate extension for model 130	50 lbs

Specifications and design are subject to change without notice and without liability, therefore, whenever applicable specifications are in accordance with SAE standards.

PH: (800) 456-7100

www.paladinbrands.com



The Power of Combined Excellence

Scrap Grapples

UTILITY & CONSTRUCTION SCRAP GRAPPLES

FEATURES:

- Standard cylinder guards protect all cylinder components
- Standard load check valve
- 1¼" cylinder pivot pins
- 1¼" x 24" patented grapple pins reduce torsional force
- 3/8" end plates on Utility Grapple
1/2" end plates on Construction Grapple
- Patented cushioned cylinders are 2" x 8" x 1¼" on full feature
- Bucket edge drilled for FFC replaceable edge unless specified
- Optional 3/4 x 8" double beveled edge

IMPORTANT: All replacement hydraulic hoses and fittings must have a minimum rated working pressure of 4000 psi. Hoses and hydraulic couplers from the attachment to the loader are included for skid-steer only.

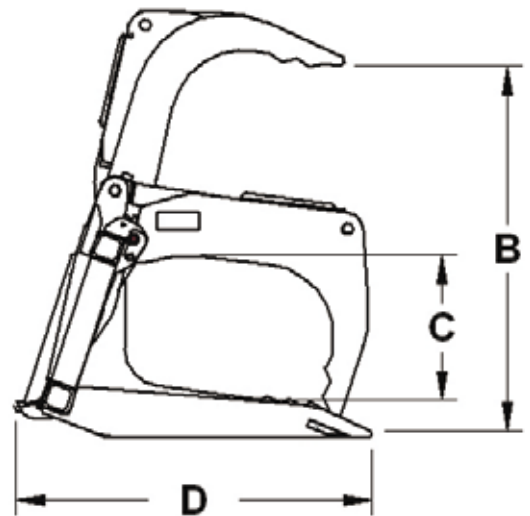
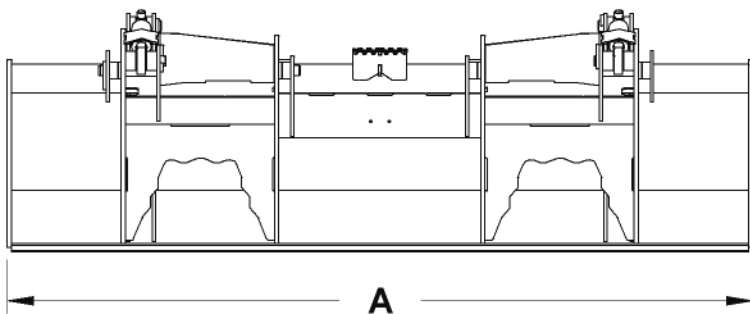
Utility Scrap Grapple

Order Code	11860	11866	11872
A. Overall Width	60¾"	66¾"	72¾"
B. Overall Height Grapple Open	34"	34"	34"
C. Overall Height Grapple Closed	19¾"	19¾"	19¾"
D. Overall Depth	36"	36"	36"
Weight	738	788	835

Construction Scrap Grapple

Order Code	11876	11882	11888
A. Overall Width	77"	83"	89"
B. Grapple Open	40"	40"	40"
C. Grapple Closed	20"	20"	20"
D. Overall Depth	38"	38"	38"
Weight	1081	1133	1180

Carrier Specifications:	Utility	Construction
lift capacities	<4,000 lbs	<7,500 lbs
operating weight	<8,000 lbs	<11,000 lbs



PH: (800) 456-7100

www.paladinbrands.com



BRADCO

FFC

HARLEY

MCMILLEN

SWEEPSTER

The Power of Combined Excellence

Forked Scrap Grapple

FORKED SCRAP GRAPPLE (FOR SSL, COMPACT UTILITY LOADERS, SMALL WHEEL LOADERS AND BACKHOE LOADERS)

FEATURES:

- Ideal for brush and refuse removal; load loose material leaving dirt behind
- Grapples work independently to handle uneven loads
- 3/8" thick end plates
- 2.25" x 38.75" round tines
- Hardened sleeves at pivot points
- 29" useable tine
- Patented cushioned and sleeved cylinders are 2" x 8" x 1 1/4" on full feature

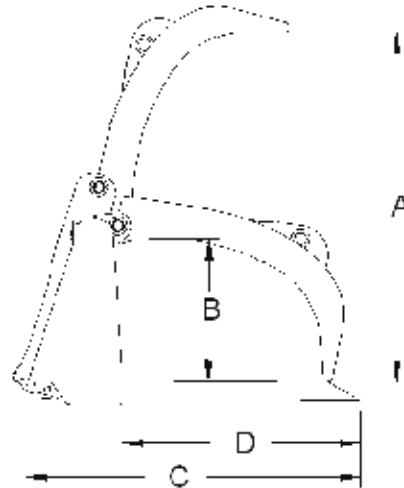
IMPORTANT: All replacement hydraulic hoses and fittings must have a minimum rated working pressure of 4000 psi. Hoses and hydraulic couplers from the attachment to the loader are included for skid-steer only.

LAF #	Weight (approx.)	Width ID	Height Open	Height Closed	Tine Depth	Tine Length	Tines
Full Featured*			A	B	C	D	
10167*	1,303 lbs	66"	42.5"	17.3"	40.5"	29"	10
10173*	1,514 lbs	72"	42.5"	17.3"	40.5"	29"	11
10179*	1,542 lbs	78"	42.5"	17.3"	40.5"	29"	12
10185*	1,577 lbs	84"	42.5"	17.3"	40.5"	29"	13
Standard Featured							
10067	1,266 lbs	66"	42.5"	17.3"	40.5"	29"	10
10073	1,301 lbs	72"	42.5"	17.3"	40.5"	29"	11
10079	1,329 lbs	78"	42.5"	17.3"	40.5"	29"	12
10085	1,364 lbs	84"	42.5"	17.3"	40.5"	29"	13

Carrier Specifications:
 lift capacities <10,000 lbs
 operating weight <20,000 lbs

***NOTE:** Full Featured includes hardened pin, cushioned cylinder kit & cylinder/hose guard.

Specifications and design are subject to change without notice and without liability, therefore, whenever applicable specifications are in accordance with SAE standards.



PH: (800) 456-7100

www.paladinbrands.com

